

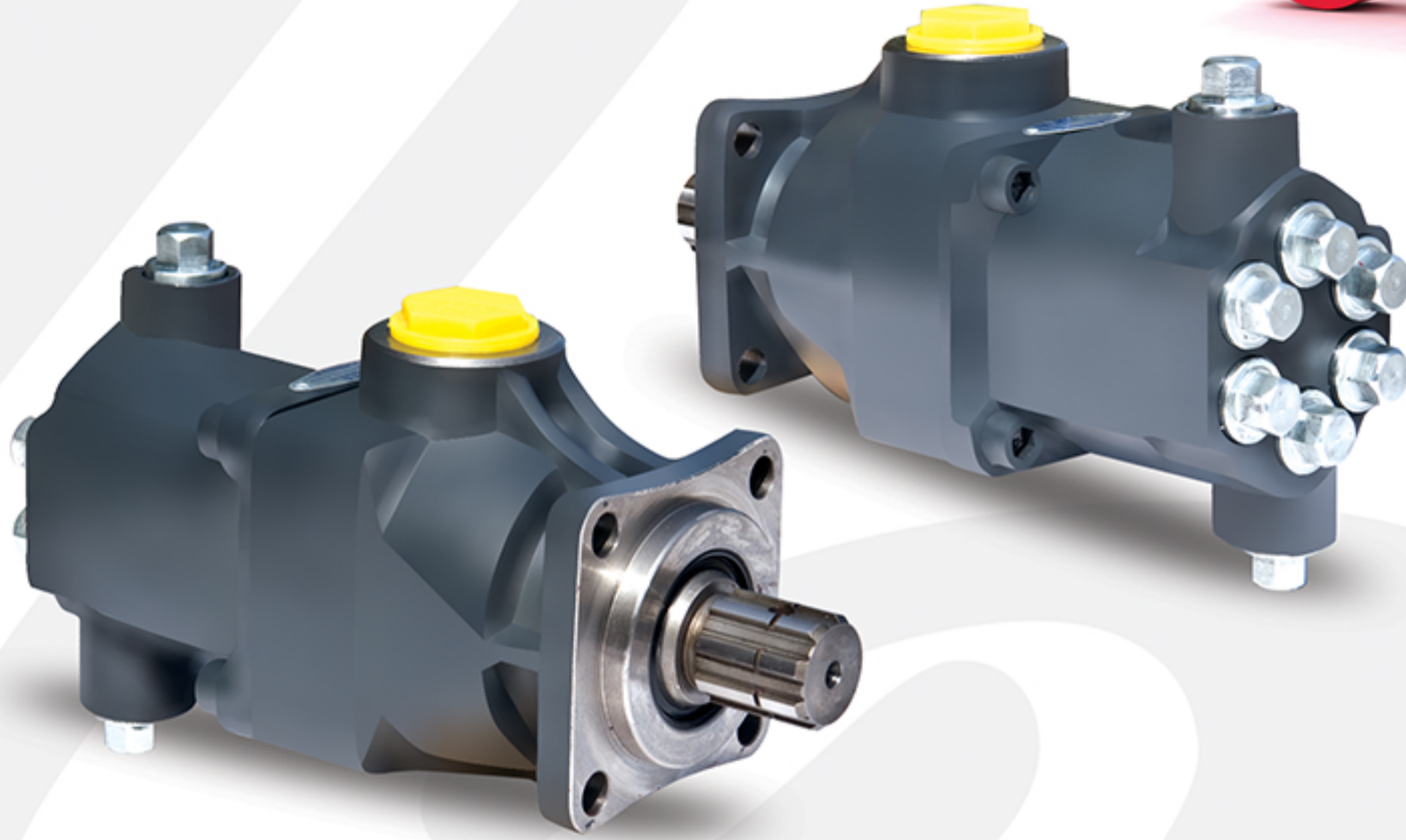
# PİSTONLU POMPALAR

## PISTON PUMPS

### POMPES A PISTON

PİSTONLU HİDROLİK POMPA  
PISTON HYDRAULIC PUMP  
POMPE HYDRAULIQUE A PISTONS

## P-6060-02



Uygun Vizkozite Aralığı  
Optimum Viscosity Field  
Viscosité Optimum Convenable

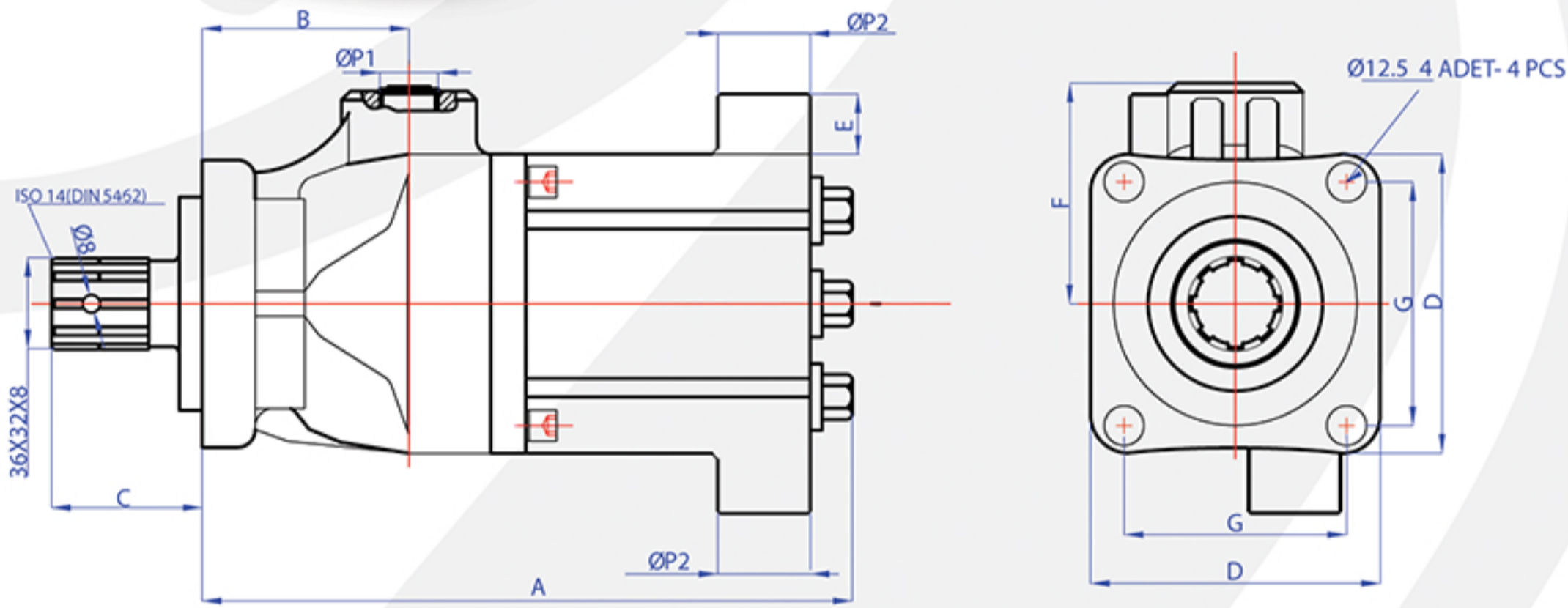
cST15  
cST35

Çalışma Sıcaklığı  
Working Temperature  
Température d'Opération

-10 °C  
+80 °C

Dönüş Yönü  
Direction Of Rotation  
Direction De Rotation

Sağ ve Sol  
Right & Left  
Droite & Gauche



### TEKNİK VERİLER - TECHNICAL DATAS - DONNES TECHNIQUE

Tip - Kod Type - Code	Debi Verim Deby / Débit 1000 d.dk / Rpm Tr / Min	Çalışma Basıncı Working Pressure Pression de Travail	Test Basıncı Test Pressure Pression d'Essais	Çalışma Devri Revolution Working Puissance de Travail D/Dak R/M - Tr/Min.	Maksimum Devir Maximum Revolution Puissance Maximum D/Dak R/M - Tr/Min.	Ağırlık Weight Poid
P-6060-02	55 Lt	235 Bar	300 Bar	1300	1500	13.13
P-6045-02	45 Lt	250 Bar	300 Bar	1300	1500	13.08
P-6035-02	35 Lt	250 Bar	300 Bar	1300	1500	13.03
P-6027-02	27 Lt	250 Bar	300 Bar	1300	1500	12.98
P-6017-02	17 Lt	250 Bar	300 Bar	1300	1500	12.93

Tip / Type	A (mm)	B (mm)	C (mm)	D (mm)	E (mm)	F (mm)	G (mm)	Ø P1 Giriş Inlet / Aspiration	Ø P2 Çıkış Outlet / Sortie
P-6060-02	247	86	53	102	20	75	80	G 1 1/4"	M 22x15
P-6045-02	247	86	53	102	20	75	80	G 1 1/4"	M 22x15
P-6035-02	247	86	53	102	20	75	80	G 1 1/4"	M 22x15
P-6027-02	247	86	53	102	20	75	80	G 1 1/4"	M 22x15
P-6017-02	247	86	53	102	20	75	80	G 1 1/4"	M 22x15