



DİŞLİ POMPALAR GEAR PUMPS POMPES A ENGRENAGE

30 SERİSİ MEKANİK VANALI T1 TİP DİŞLİ POMPA
30 SERIES T1 GEAR PUMP MECHANIC VALVE
POMPE A ENGRENAGE SERIE DE 30 TYPE T1 A VALVE MECANIQUE

Z-F-5061-T1



Uygun Viskozite Aralığı
Optimum Viscosity Field
Viscosité Optimum Convenable

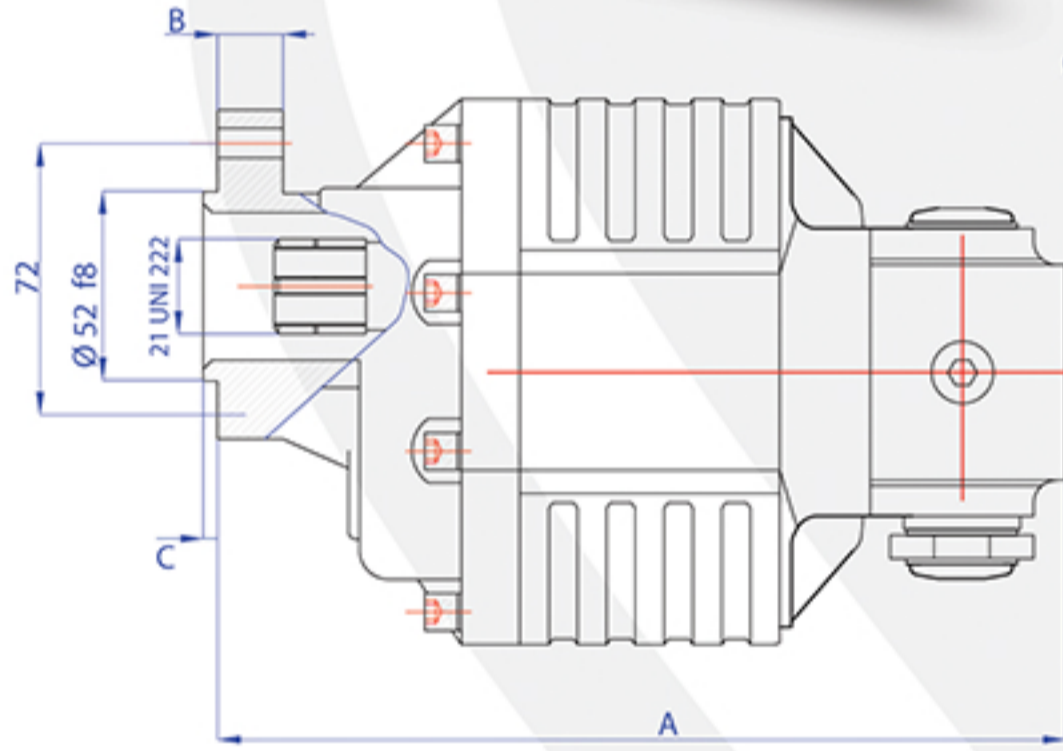
cST15
cST35

Çalışma Sıcaklığı
Working Temperature
Température d'Opération

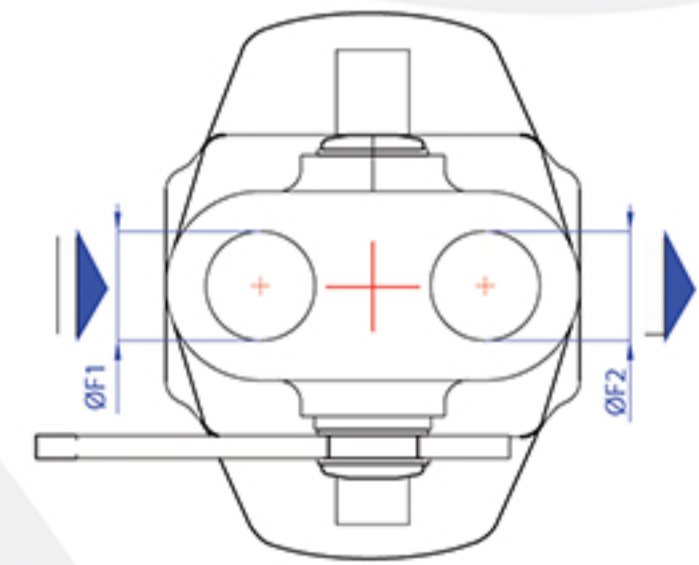
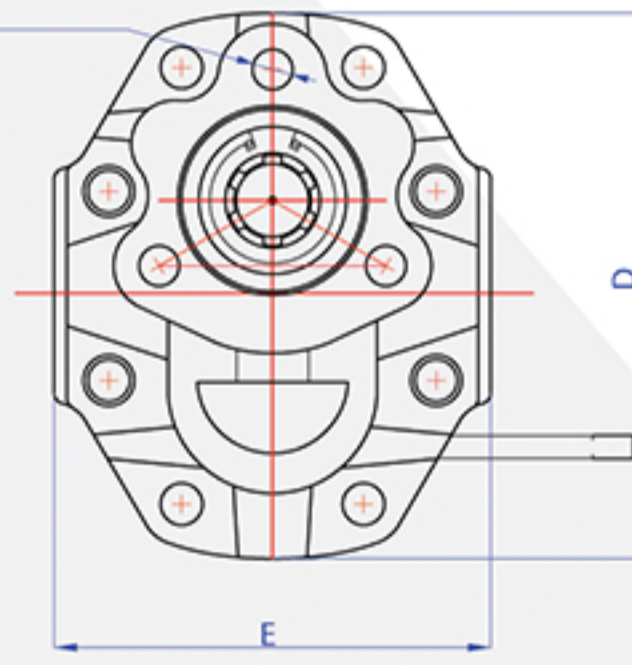
-10 °C
+80 °C

Dönüş Yönü
Direction Of Rotation
Direction De Rotation

Sağ veya Sol
Right or Left
Droite ou Gauche



Ø11 3 ADET-3 PCS



TEKNİK VERİLER - TECHNICAL DATAS - DONNES TECHNIQUE

Tip - Kod Type - Code	Debi Verim Deby / Dèbit 1000 d.dk / Rpm Tr / Min	Çalışma Basıncı Working Pressure Pression de Travail	Test Basıncı Test Pressure Pression d'Essais	Çalışma Devri Revolution Working Puissance de Travail D./Dak R./M. - Tr/Min.	Maksimum Devir Maximum Revolution Puissance Maximum D./Dak R./M. - Tr/Min.	Ağırlık Weight Poid
Z-F-5043-T1	43	270 Bar (Max)	295 Bar (Max)	1500	2000	12.60 Kg
Z-F-5051-T1	51	230 Bar (Max)	255 Bar (Max)	1500	2000	13.10 Kg
Z-F-5061-T1	61	210 Bar (Max)	230 Bar (Max)	1500	2000	13.60 Kg

Tip / Type	A (mm)	B (mm)	C (mm)	D (mm)	E (mm)	Φ P1 Giriş Inlet / Aspiration	Φ P2 Çıkış Outlet / Sortie
Z-F-5043-T1	219	17	4	151	117	G 1"	G 1"
Z-F-5051-T1	222	17	4	151	117	G 1"	G 1"
Z-F-5061-T1	230	17	4	151	117	G 1"	G 1"