



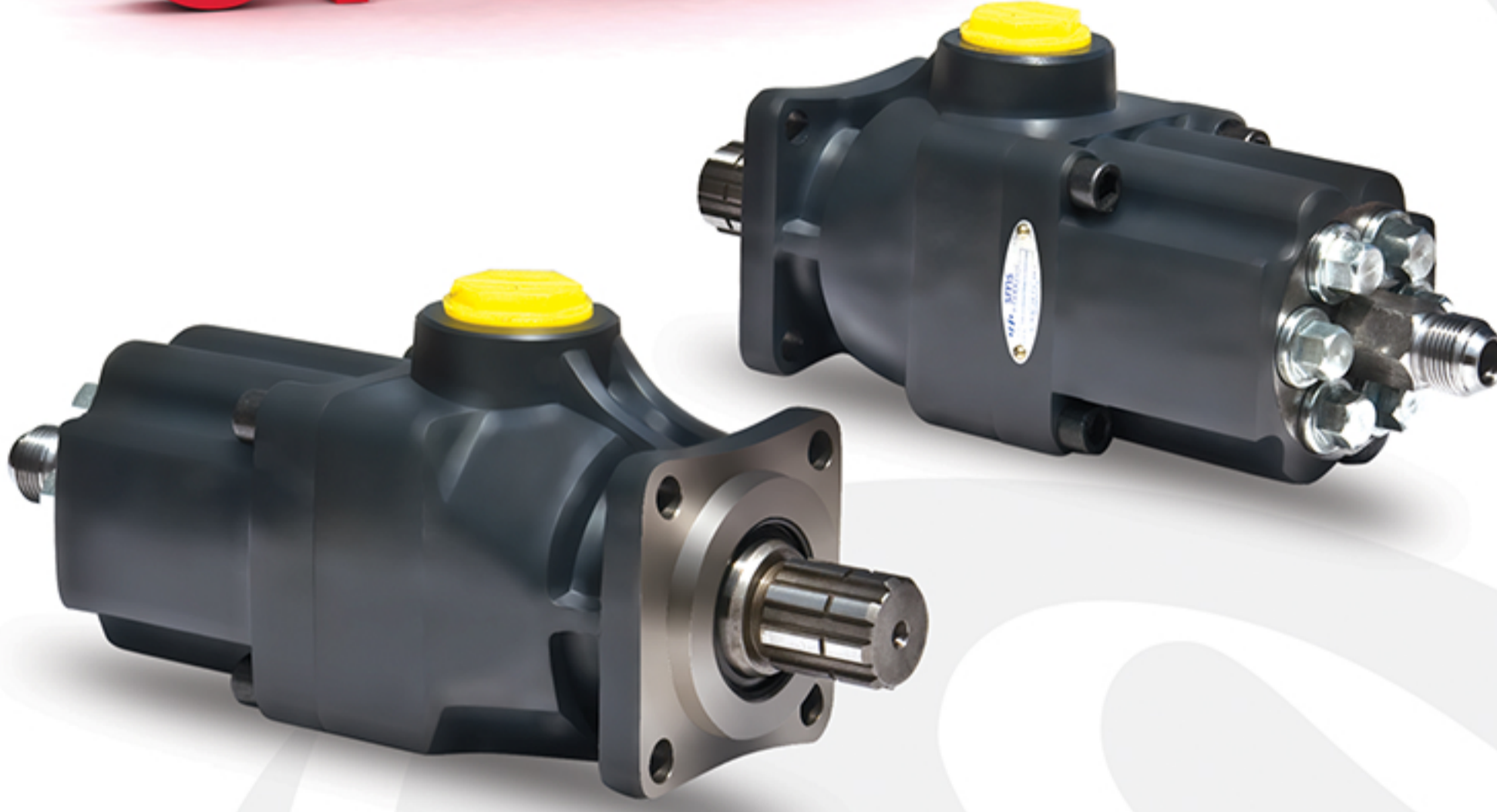
PİSTONLU POMPALAR

PISTON PUMPS

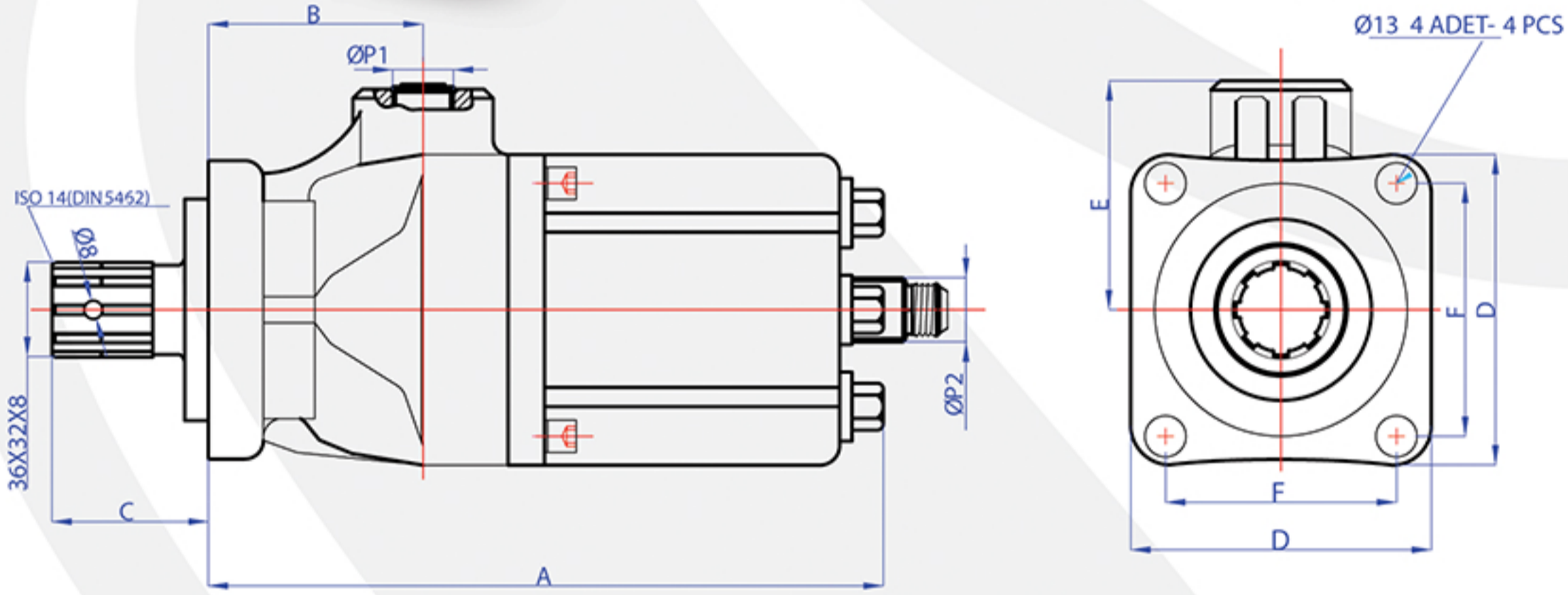
POMPES A PISTON

PİSTONLU HİDROLİK POMPA
PISTON HYDRAULIC PUMP
POMPE HYDRAULIQUE A PISTONS

P-6060-01



Uygun Vizkozite Aralığı Optimum Viscosity Field Viscosité Optimum Convenable	cST15 cST35
Çalışma Sıcaklığı Working Temperature Température d'Opération	-10 °C +80 °C
Dönüş Yönü Direction Of Rotation Direction De Rotation	Sağ ve Sol Right & Left Droite & Gauche



TEKNİK VERİLER - TECHNICAL DATAS - DONNES TECHNIQUE

Tip - Kod Type - Code	Debi Verim Deby / Débit 1000 d.dk / Rpm Tr / Min	Çalışma Basıncı Working Pressure Pression de Travail	Test Basıncı Test Pressure Pression d'Essais	Çalışma Devri Revolution Working Puissance de Travail D/Dak R/M - Tr/Min.	Maksimum Devir Maximum Revolution Puissance Maximum D/Dak R/M - Tr/Min.	Ağırlık Weight Poid
P-6060-01	55 Lt	235 Bar	300 Bar	1300	1500	14.73
P-6045-01	45 Lt	250 Bar	300 Bar	1300	1500	14.68
P-6035-01	35 Lt	250 Bar	300 Bar	1300	1500	14.63
P-6027-01	27 Lt	250 Bar	300 Bar	1300	1500	14.58
P-6017-01	17 Lt	250 Bar	300 Bar	1300	1500	14.53

Tip / Type	A (mm)	B (mm)	C (mm)	D (mm)	E (mm)	F (mm)	Ø P1 Giriş Inlet / Aspiration	Ø P2 Çıkış Outlet / Sortie
P-6060-01	247	86	53	102	75	80	G 1 1/4"	1 1/6"
P-6045-01	247	86	53	102	75	80	G 1 1/4"	1 1/6"
P-6035-01	247	86	53	102	75	80	G 1 1/4"	1 1/6"
P-6027-01	247	86	53	102	75	80	G 1 1/4"	1 1/6"
P-6017-01	247	86	53	102	75	80	G 1 1/4"	1 1/6"